

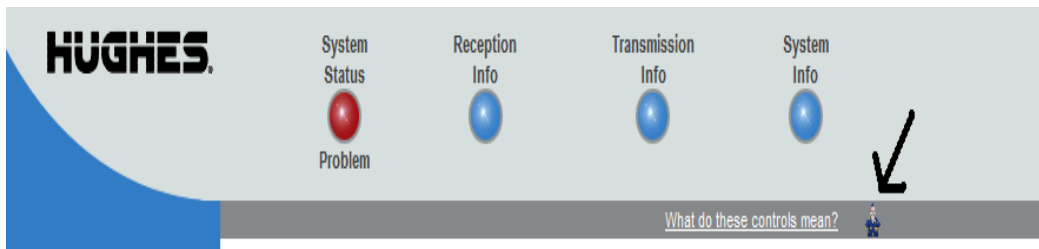
Running Registration on a Hughes Net Modem:

Make sure all cables are connected between the modem and the antenna, and the modem and the computer.

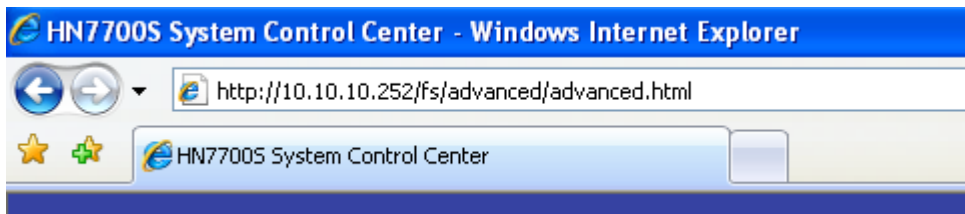
- On the computer connected to the modem, open a browser (either Explorer or Fire Fox)
- Type in the following IP address into the address bar of the browser: 192.168.0.1
 - This will bring up the System Control Center

First, open the advanced options menu:

- On an HN series modem, click on the little man standing on the right hand side of the gray bar running underneath the four information buttons.



- On a DW series modem, go to your address bar and make sure it looks like this:
 - o <http://192.168.0.1/fs/advanced/advanced.html>



Once there, you should have the advanced menu running down the left side of the page.

- Click on “installation”
- Click on “Setup” (a new window should pop up)

HN7700S System Control Center - Windows Internet Explorer

http://10.10.10.252/fs/advanced/advanced.html

HN7700S System Control Center

S/N: 4042384
Fallback bin: [5.3.0.28_PID]

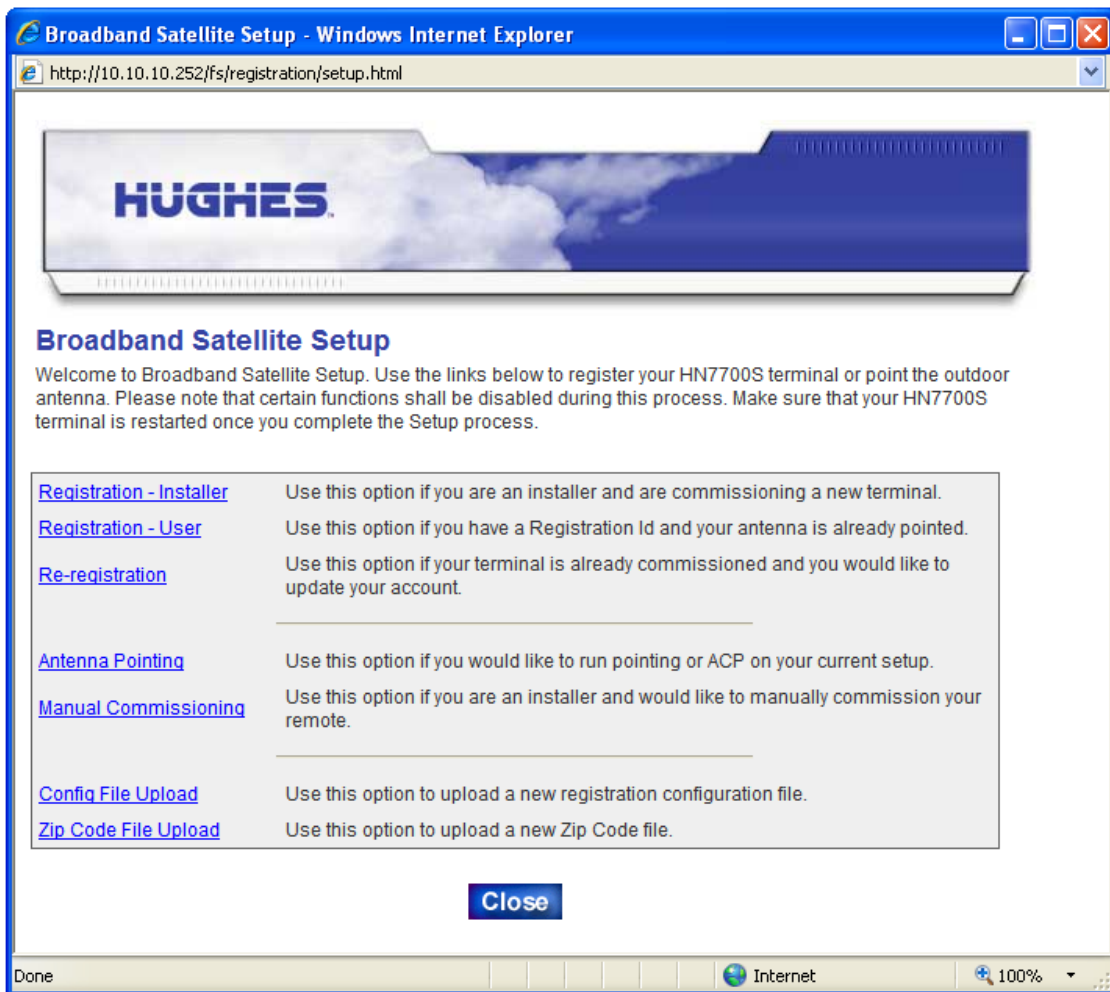
Advanced Configuration and Statistics

Enable Auto Refresh: Interval (sec):

Advanced Menu

- + General
- + Receiver Stats
- + Transmitter
- + Diagnostics
- + LAN
- + IP Routing
- + IP Stack/Services
- + Firewall
- + PEP
- + Turbopage
- + Serial Protocols
- + Logs
- + OS Stats
- + VADB
- **Installation**
 - Setup
 - ACP Stats
 - Ranging Stats
 - Force Ranging
 - SDL Monitor
 - SDL Missed Frames
 - Config Params
 - Fallback Update
 - VADB Test

Once you see the new window (pictured below), click on your very first option:
Registration – Installer



- Enter your zip code, or check the box for “entering location manually” and click next.
- If you need to enter your location manually, you will have to provide your latitude and longitude coordinates. (These may be saved from your previous installation)
- A verification screen of your antenna location will be displayed, check the information and click next.
- On the satellite parameters screen, you will need to use the drop down box to select which satellite your antenna is pointed to. (There may be several different options for your satellite, any of these should work)
- Select your satellite and click next. You will then go to the satellite parameters verification screen. Click Next.
- Select either 1 watt or 2 watt depending on your transmitter type. Click next.
- On the next screen you should be able to check your satellite signal strength. You need to be somewhere above 50, but the higher this is the better.

- Verify your signal strength, close the signal meter, and then click next.
- The next screen should be the “cross poll” screen. You can check the cross polarization two ways. Either automatic (recommended) or manual if you need to see the cross poll test results.
- Click on automatic, and wait for your system to pass, then close the cross poll window and click next to proceed. If your system does not pass a cross poll test you may need to tweak the satellite dish a bit.

- After you make it through the cross poll, your modem will pause to download some configuration files. If it loses connection for any reason just hit “retry”.

Next, you will need to proceed to the SAN and PIN Registration section.

Once there, you will need to accept the Hughes Net agreement, and proceed to the next page.

Enter your Site Account Number (SAN) and your PIN number into the provided areas. Make sure to use all capital letters, and proceed.

You should be forwarded to the welcome screen; there will be some information there, click next to proceed.

There will be several more screens, but no more information you need to enter.

Follow the prompts through the next couple of screens.

The modem will direct you to restart. After you restart the modem, let it set for about 20 minutes. It will need to update itself from the Hughes Net servers with the latest software.

It will restart once more, and you should be able to browse at this point.

You are finished.