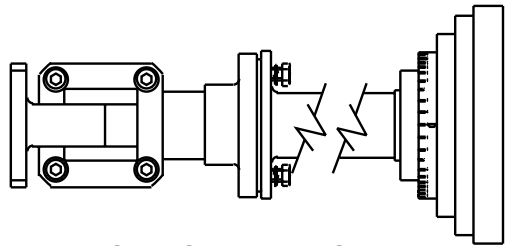
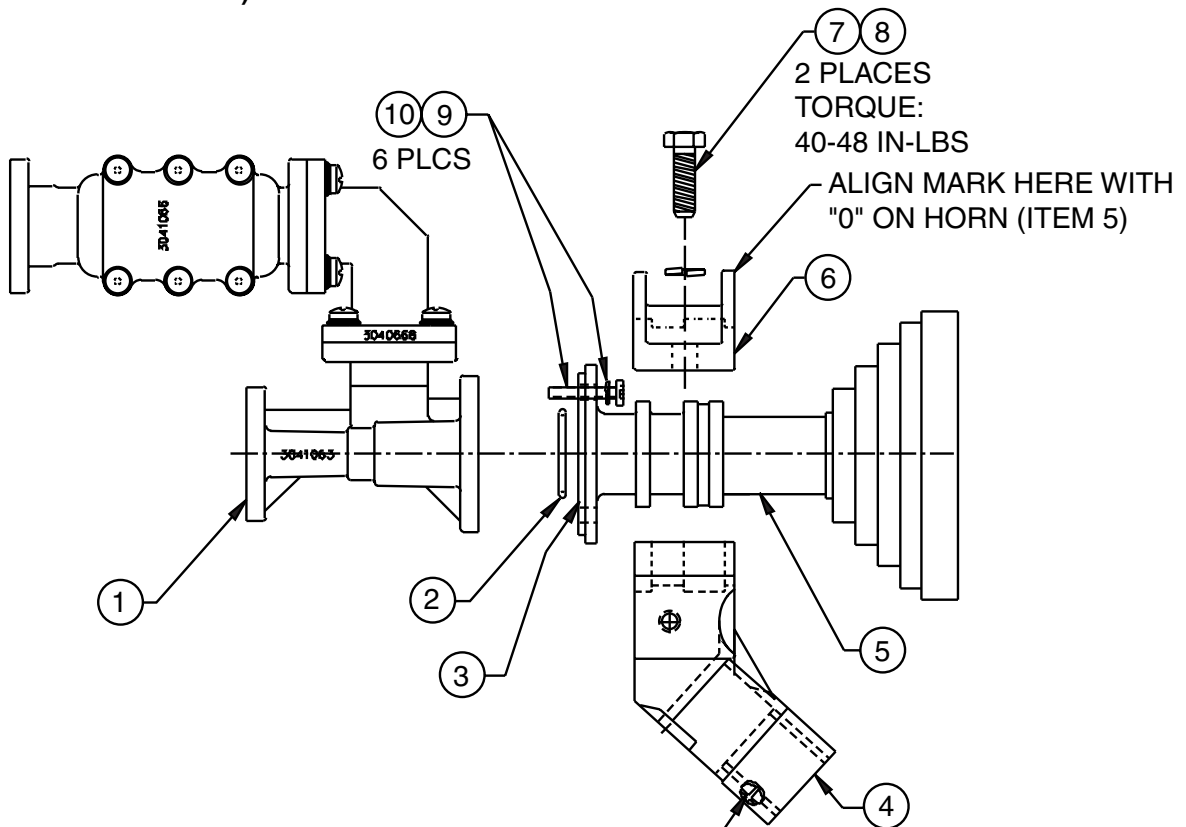




**INSTALLATION INSTRUCTIONS & PARTS LIST FOR MO. 611678301
KU Tx-Rx FEED OMT/FILTER ASSEMBLY**



**HORN ORIENTATION
(VIEWED FROM TOP)**



NOTE:

1. SEE ANTENNA INSTRUCTION MANUAL TO INSTALL FEED SUPPORT LEGS
2. TIGHTEN TWO SCREWS AT BOTTOM OF JUNCTION BLOCK (4) EQUALLY, AFTER BOTTOM LEG IS INSTALLED.

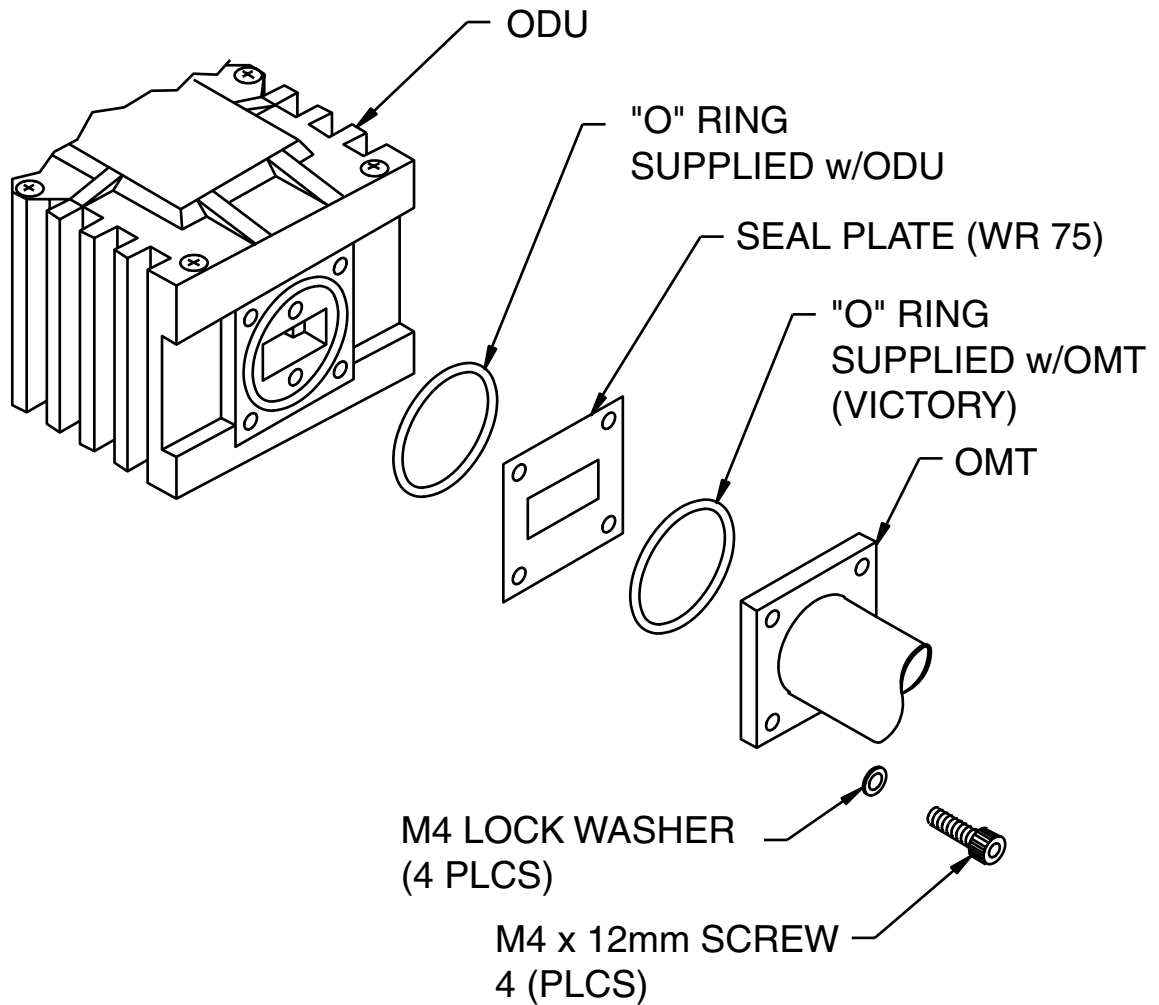
ITEM	DESCRIPTION	QTY.
1	OMT/FILTER ASSY, Ku BAND	1
2	"O" RING	1
3	KAPTON SEAL	2
4	FEED SUPPORT w/SCREWS	1
5	FEED HORN ASSEMBLY	1

ITEM	DESCRIPTION	QTY.
6	CLAMP	1
7	BOLT, HEX HD, M6 x 1.0 x 20mm	2
8	WASHER, LOCK, 1/4	2
9	SCREW, HEX SOCKET HD, SS, #6-32x1/2	6
10	WASHER, LOCK, #6, SS	6



World Headquarters (USA) • 1315 Industrial Park Drive, Smithfield, NC 27577 USA • Telephone: (919) 989-2205 • Fax: (919) 989-2200
International (GmbH) • Julius-Moser-Str. 13, 75179 Pforzheim, Germany • Telephone: +49 (0) 7231-14557-0 • Fax: +49 (0) 7231-14557-10

**INSTRUCTIONS FOR
MODEL 611678301V
WHEN ODU IS SUPPLIED w/"O" RING**



1. APPLY SILICONE GREASE TO "O" RINGS.
2. TORQUE M4 SCREWS TO 15 - 20 IN-LBS.